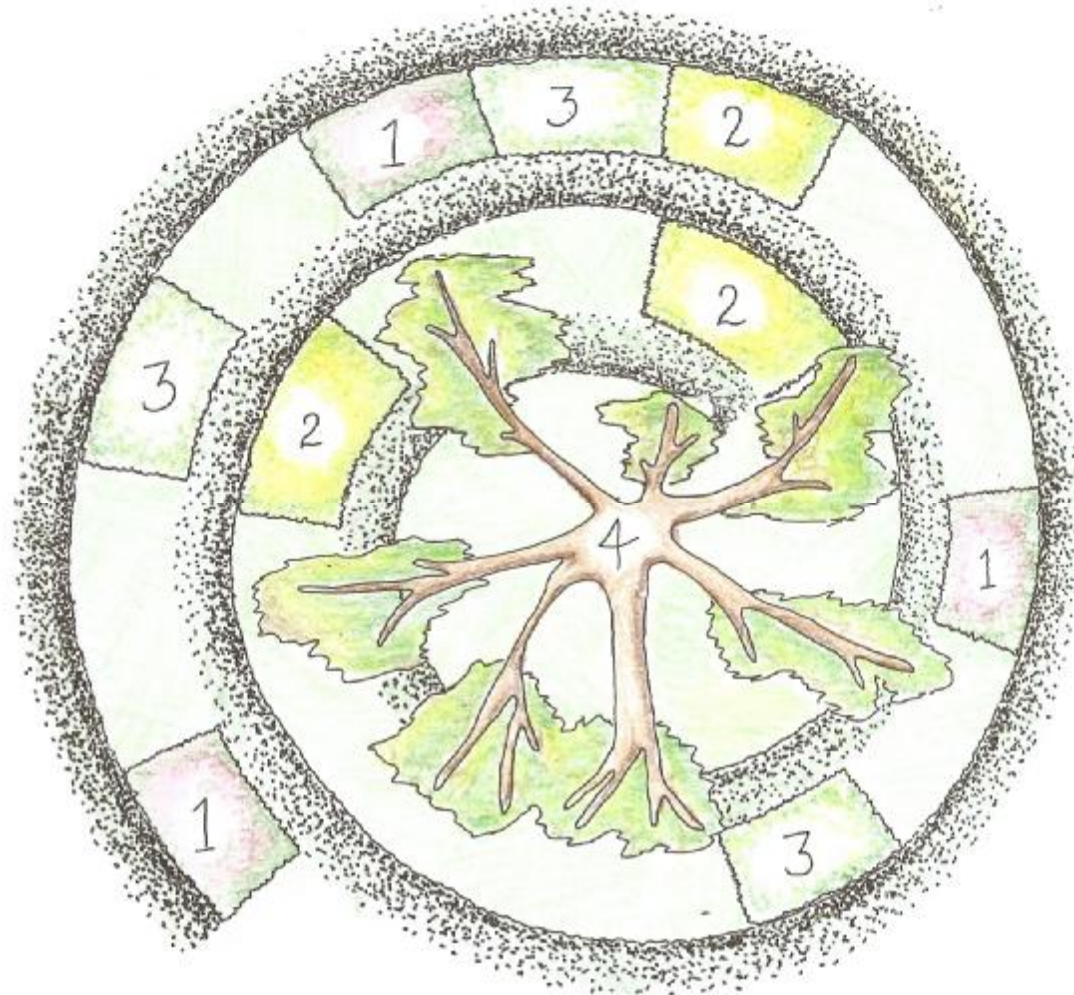


Hampton Court Palace Flower Show

Takeaway design idea: a fragrant turf maze for children

from Southend-on-Sea Borough Council's *Playful Garden* designed by Denis Lloyd



a fragrant turf maze for children



from Southend-on-Sea Borough Council's *Playful Garden* designed by Denis Lloyd

Recreate the fun-filled turf helix from The Playful Garden for the ultimate in garden play. Hopscotch-like patches of scented thyme release their perfume as little feet run over them, and there's even a tree to climb once you get to the middle.

1 - *Thymus Coccineus* Group (x 15)

This thyme is one of the most spectacular of them all, with deep pink, almost maroon tubular flowers which are irresistible to bees. The leaves are blue-green and intensely fragrant.

2 - *Thymus citriodorus* 'Aureus' (x 15)

The tiny gold-and-green leaves of this pretty little thyme have a tangy edge to the scent, rather like lemons, which perfumes the air whenever you tread on the plant.

3 - *Thymus vulgaris* (x 15)

The easiest of all the thymes, and the best for cooking, this ground-hugging plant forms a loose mat of tiny fragrant evergreen leaves smothered in pinkish-mauve flowers in summer. It won't mind being trodden on: in fact walking on it helps it stay in a dense mat.

4 - *Quercus robur* (x 1)

Everyone knows the good old English oak makes the best climbing tree with its gnarled trunks and forking branches. It is slow-growing, though, so if you're too impatient (or don't have an established tree already) build a den at the centre instead.